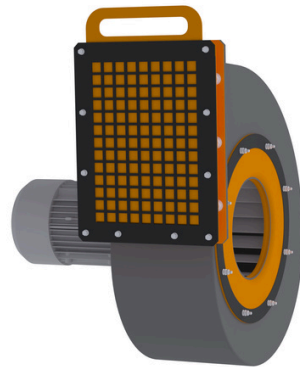
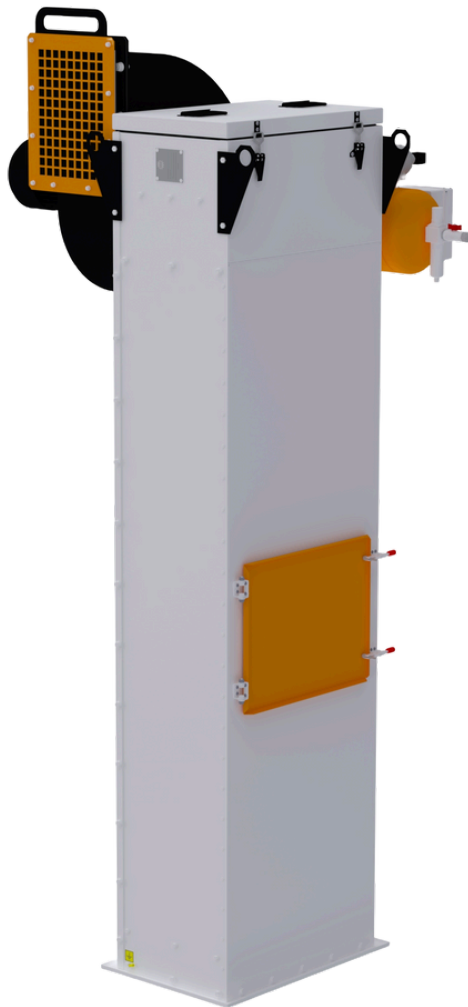
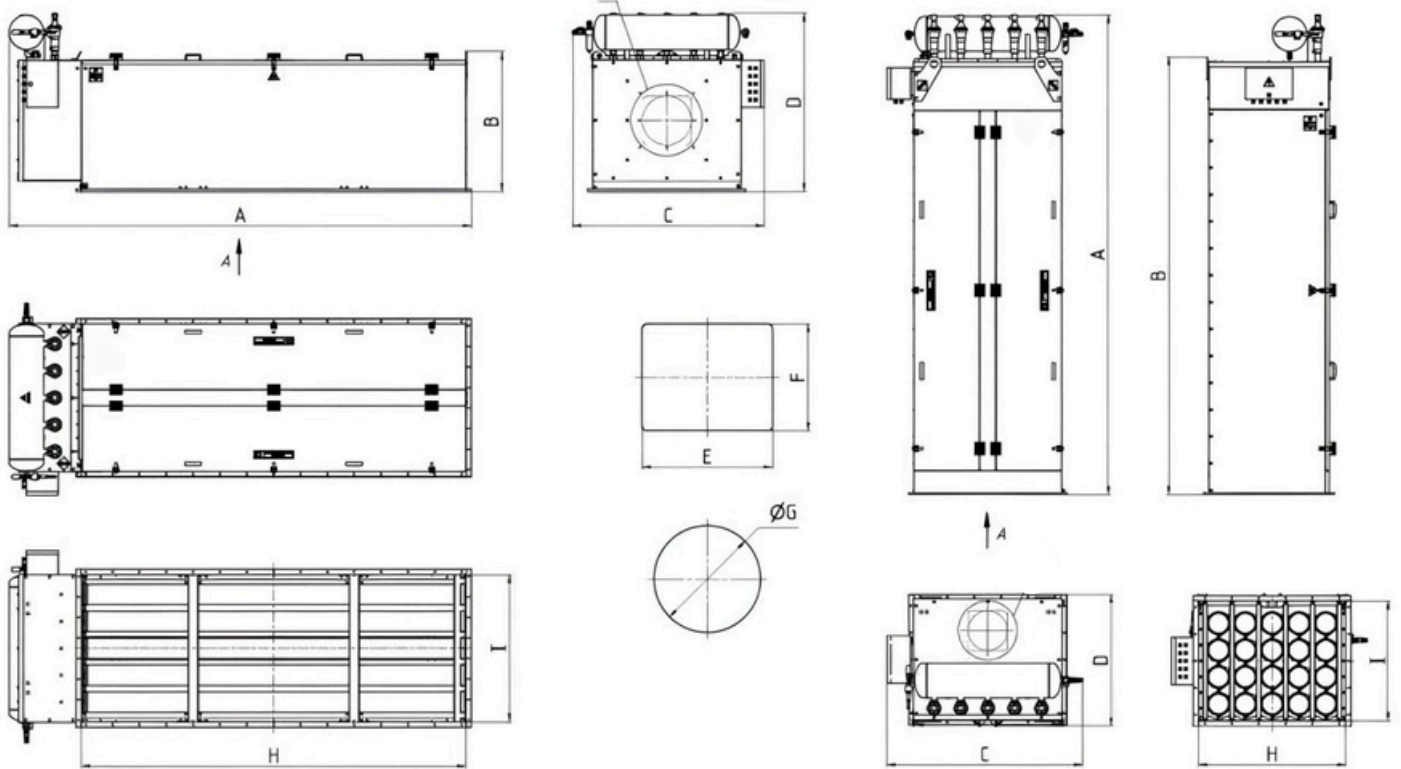


## Uni-f™



- A balanced regeneration system extends the lifespan of sleeves by 2 times compared to existing analogues.
- Application of filtration materials from Remarkable and DONALDSON companies.
- Highly intelligent control system for installation parameters ensures complete autonomous operation and eliminates human intervention.
- The use of fans with minimal noise and vibration characteristics allows for the application of installations in enclosed spaces without the need for additional noise absorption systems.
- The fans used have an increased efficiency compared to analogues by more than 20% due to the special angle of attack of the impeller blades, which allows achieving the specified performance and pressure parameters with lower electricity consumption.
- Possibility of manufacturing the installation in explosion-proof and spark-proof designs.
- Possibility of designing the installation to operate at high temperatures in the range of 150-200 degrees Celsius.
- Possibility of designing the installation to work with food products and with dusts of aggressive substances.

In the equipment, dusty air is filtered through a chamber. Dust particles settle on filter elements, while purified air is released through an exhaust fan. A self-cleaning system returns accumulated dust to the product.



Model of the filter	Performance, m <sup>3</sup> /h	Filter area, m <sup>2</sup>	A	B	C	D	E	F	ØG	H	I	Weight without rotor, kg
Uni-f-6	500-1000	3,5	1855		1030	730	-	-	200	580	415	160
Uni-f-6			1920	543	1030	585				1570	590	
Uni-f-9	1000-1700	6,7	2260		1100	945	-	-	230	585	585	215
Uni-f-9			2320	715	1020	755				1970	590	
Uni-f-12	1700-3250	11,3	2755		1270	945	-	-	255	755	585	280
Uni-f-12			2755	715	1270	755				2455	760	
Uni-f-20	3250-5000	18,9	3020	2765	1240	835	310	310	-	930	755	385
Uni-f-20			2930	885	1215	1130				2435	930	
Uni-f-28	5000-7000	26,4	2995	2895	1490	1150	400	400	-	1270	755	480
Uni-f-28			2930	885	1560	1130				2435	1270	
Uni-f-40	7000-10000	37,7	2895	2895	2000	1090	600	600	-	1780	755	645
Uni-f-40			2915	1490		1130				2435	1780	