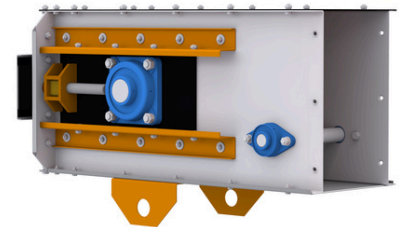
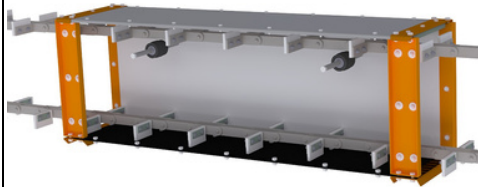
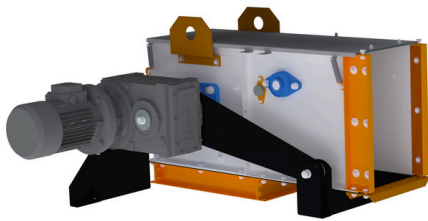


# ECOFLOW™

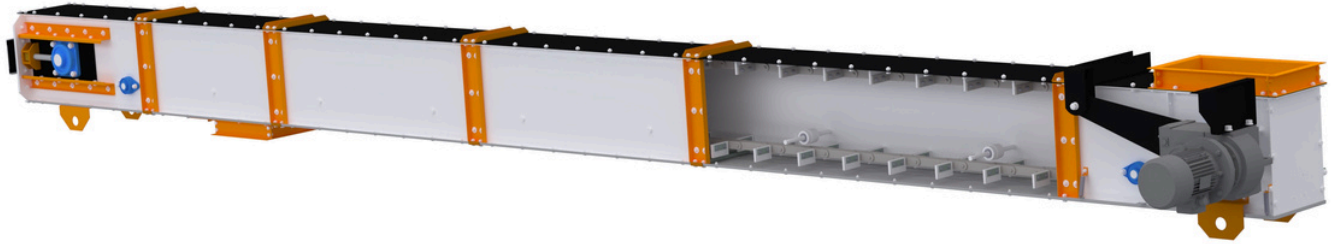


- High-strength steel shafts;
- Tensioning by screws;
- Possibility of installing a wrap and support sensor.

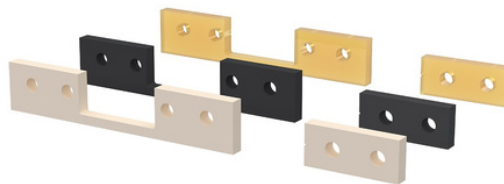
- Surface hardening of gear tooth cavities, which positively impacts service life;
- Collapsible sprockets can be mounted straight grooved for direct fit, or on a quick-clamping sleeve;
- High-precision steel shafts;
- Chain break sensor.

- Galvanized housing;
- Repairability;
- Option to install lined plates made of Hardox steel or PE1000 polyethylene.

- Explosion-proof inlet and outlet devices;
- High durability: Over 30,000 hours of operation;
- Abrasion-resistant construction;
- Optional weather shelter;
- Lining options: HDPE, Polyurethane, HARDOX 450;
- Enhanced support at loading points;
- Dual-Sided Safety Sensors: Belt Run-off, Belt Speed, Emergency Switch;
- Scraper cleaning for belt maintenance;
- Reversible functionality;
- Automatic (or manual) dumping cart for efficient loading;
- Antistatic, oil-resistant, and frost-resistant conveyor belt;
- Additional Safety Sensors: Inspection Hatch Openings, Safety Guard Removal, Back Pressure;
- Seamless integration with aspiration systems;
- ATEX22 and ATEX21 compliant versions for hazardous environments;
- Additional swivel self-centering roller supports for stability.



- Guaranteed productivity - 100, 150, 200, 250, 300, 350, 450, 500, 1000, 1500 t/h;
- Product displacement without losses;
- 100% preservation of product quality;
- Dual-Sided Safety Sensors: Belt Run-off, Belt Speed, Cable Emergency Switch;
- Scaper cleaning for drive station belt maintenance;
- Reversible functionality for versatile operations;
- Automatic (or manual) dumping cart for efficient loading into floor storage warehouses;
- Conveyor belt features antistatic, oil-resistant, and frost-resistant properties;
- Additional Safety Sensors: Monitoring Inspection Hatch Openings, Safety Guard Removal, and Back Pressure;
- Seamless integration with aspiration systems;
- ATEX22 and ATEX21 compliant version available for hazardous environments;
- Additional swivel self-centering roller supports for enhanced stability.



#### Gears:

- Manufactured by CNC;
- Possible production of solid gears with bore and a finished hole for fitting;
- Bush type tapered bushing;
- Detachable design.

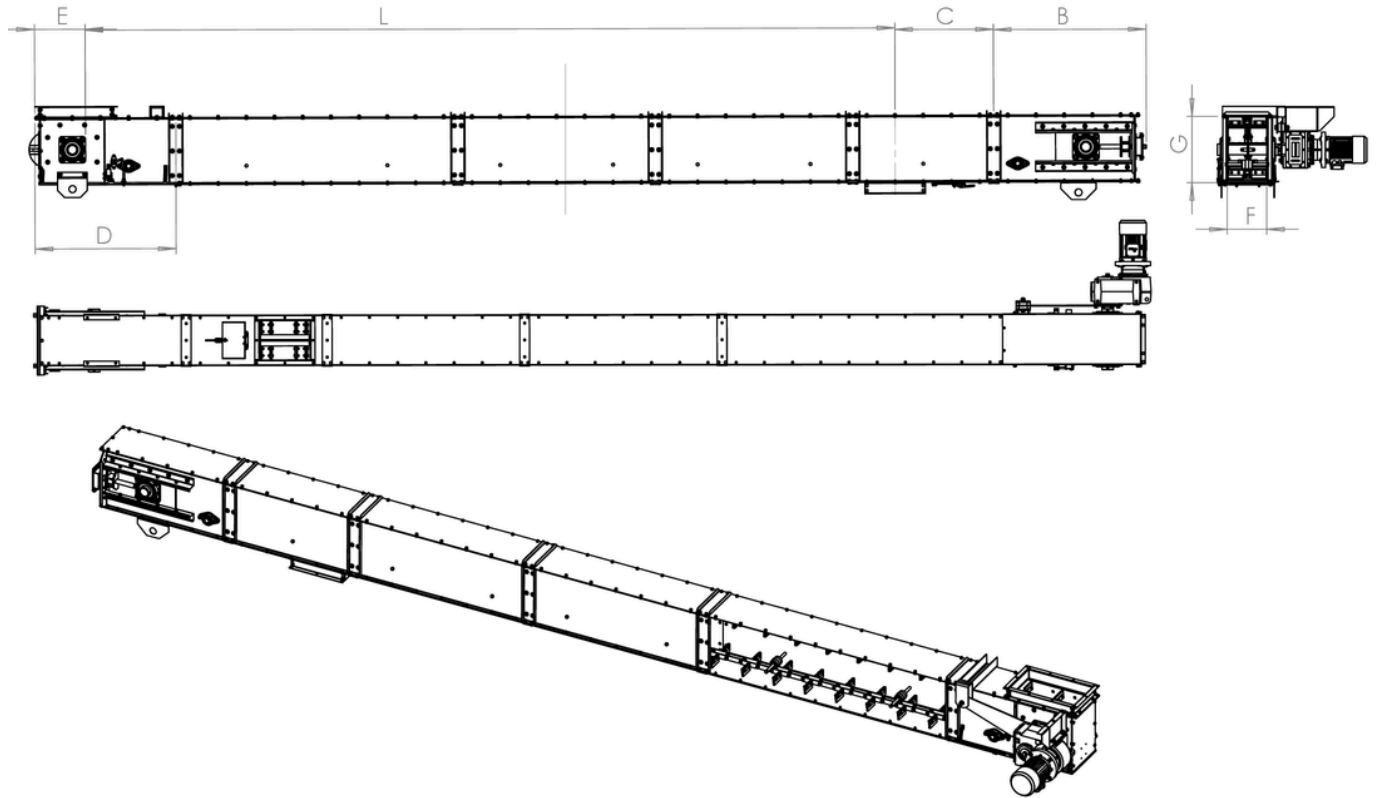
#### Scraper Blades:

- Capability of manufacturing from plastics (PE1000, PA, PU);
- Manufactured with high precision on CNC machines.

#### Chain:

- Simple and reliable construction;
- John King brand;
- Heat-treated components;
- Induction hardening of the pin.

The scraper or chain conveyor provides a seamless transport system for bulk cargoes, ensuring smooth navigation through a secure chute. Traction chain-mounted scrapers efficiently navigate through layers of bulk cargo, facilitating transportation in horizontal, inclined (up to 45°), and combined horizontal-inclined positions.



Equipment supply/provision

Equipment category	Lite	Standard	Professional
Drive	NRW	NORD	SEW Eurodrive
Bearings	CX	SNR	SKF
Chain	USA	USA	USA
Housing coating	Painted / Galvanized	Painted / Galvanized	Painted / Galvanized

The scraper or chain conveyor provides a seamless transport system for bulk cargoes, ensuring smooth navigation through a secure chute. Traction chain-mounted scrapers efficiently navigate through layers of bulk cargo, facilitating transportation in horizontal, inclined (up to 45°), and combined horizontal-inclined positions.

Technical data

Model	ECOFLOW-20	ECOFLOW-50	ECOFLOW-100I	ECOFLOW-100	ECOFLOW-175	ECOFLOW-200	ECOFLOW-250I	ECOFLOW-250	ECOFLOW-300	ECOFLOW-350	ECOFLOW-500
Performance*, t/h	5-20	40-60	70-100	100-140	150-175	175-200	250	250	300	350-400	450-600
Chain speed, m/s	0.3-0.65	0.4-0.65	0.5-0.7	0.5-0.75	0.65-0.75	0.65-0.7	0.75	0.65	0.75	0.65-0.75	0.8-0.95
Chain type	TRD-38-4000	M56	M80-M112	M80-M112	M112-M160	M112-M160	M112-M224	M112-M315	M160-M315	M224-M315	M224-Drop forged chain 550kN
Thickness, mm bottom/side/lid	3/2/1.5	3/2/1.5	3/3/2	3/3/2	3/3/2	4/3/2	4/3/2	6/3/2	6/3/2	6/3/2	6/4/2
B, mm	870	1090	1090	1090	1090	1090	1400	1400	1400	1430	1790
C, mm	300	300	300	300	300	300	400	400	400	400	560
D, mm	780	950	1020	1020	1020	1020	1150	1150	1150	1700	2100
E, mm	270	300	380	380	380	380	430	430	430	640	1260
F, mm	125	190	280	280	330	400	440	440	540	630	600
G, mm	270	380	410	470	470	470	500	600	505	600	655