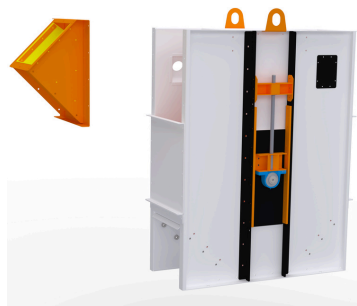
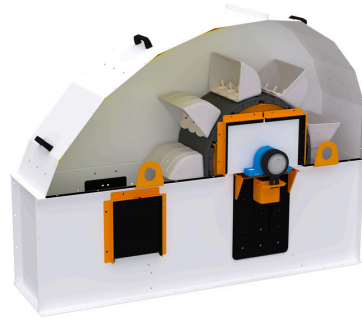
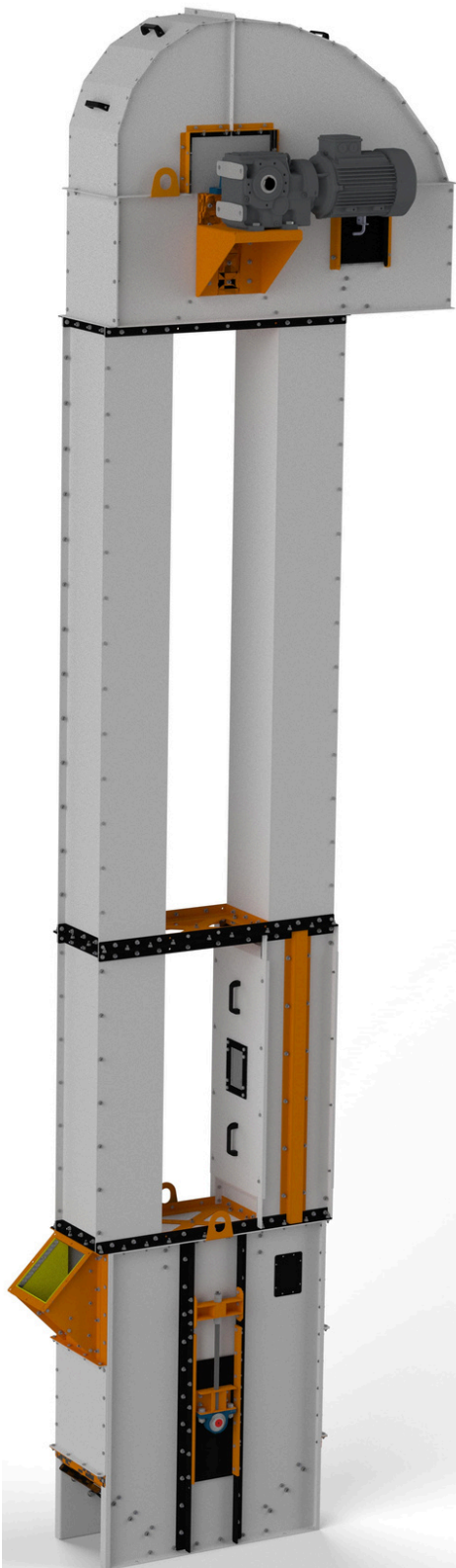


ECOTRU™



- Reliable protection against reverse movement is provided by a backstop;
- The construction is made of painted or galvanized steel;
- Lining of the working part extends the service life.

- Material: stainless steel, 316L;
- FDA silicone designed for contact with food products;
- High-temperature graphite seal (-200°C - +500°C);
- Integrated flange made of stainless steel 316L.

- Secure belt fixation for elevator belt;
- Enhanced contact area with the belt;
- Prevents belt swaying, thus minimizing the risk of belt deviation;
- Consistent bucket projection along the entire belt length;
- High wear resistance and durability.

- Polymer material: HDPE;
- Bucket designed for processing heavy bulk products;
- Suitable for handling both low and very high-speed product streams;
- Operating temperature range from -40°C to +70°C;
- Maximum temperature: +80°C.

- Main belt tensioning system;
- Lining of loading chutes;
- Shoe cleaning hatch.

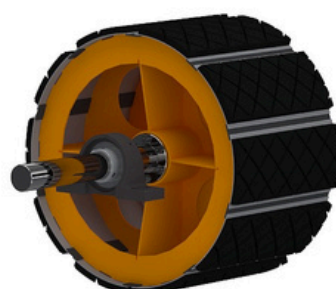
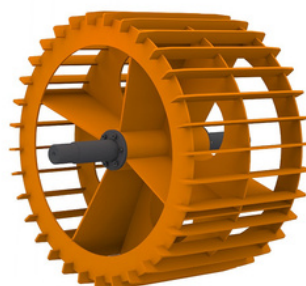
- Guaranteed productivity - 100, 150, 200, 250, 300, 350, 450, 500, 1000, 1500 t/h;
- Explosion-proof housing design;
- Optimal kinematics results in 10% lower electricity consumption compared to analogues;
- The design of the receiving and discharge devices allows minimizing the coefficient of breakage increase by 7-8 times;
- Abrasion-resistant construction.



- The technical service area enhances work during maintenance, especially when servicing the drive and bearings of the elevator head.



- The repair section allows easy access to the frame and buckets;
- Designed with removable covers on both sides of the elevator leg;
- Viewing windows on the covers are made of organic glass.



- The structural features allow minimizing stress on the lift system;
- Installation is simplified thanks to the quick-clamping Sati KLAB bushings;
- Specialized grooves in the linear plates help remove material residues and moisture;
- Due to the design, friction and noise are reduced, which positively impacts the lifespan of the structure.
- Pulleys are tailored to customer specifications;
- 12mm thick replaceable liner plates ensure longevity;
- Quick-clamping sleeves simplify setup;
- Specialized slots clear particles and moisture;
- Pulley design minimizes strain on the elevator system;
- CNC laser machines and Fronius welding ensure quality.

The bucket-type belt elevator efficiently transports bulk cargoes vertically with safety handling, minimal damage, low energy consumption, and centrifugal unloading at the head, making it ideal for grain crops and other materials.

Set of elevators 20-100 t/h

Equipment category	Lite	Standard	Professional
Drive	NRW (Germany)	Motovario (Italy)	NORD
Bearings	CX (Poland)/ SNR (France)	SNR (France)	SKF (Sweden)
Belt STIF	ARTEGO (Romania)/ COBRA	ARTEGO (Romania)/ COBRA	STIF
Belt speed, not more	3,25 m/s	2,9 m/s	2,9 m/s
Bucket material	HDPE	Metal/HDPE	Metal
Body coating	Painted/Galvanized	Painted/Galvanized	Painted/Galvanized

Set of elevators 150-400 t/h

Equipment category	Lite	Standard	Professional
Drive	NRW (Germany)	Motovario (Italy)	NORD
Bearings	CX (Poland)/ SNR (France)	SNR (France)	SKF (Sweden)
Belt STIF	ARTEGO (Romania)/ COBRA	ARTEGO (Romania)/ COBRA	STIF
Belt speed, not more	3,25 m/s	2,9 m/s	2,9 m/s
Bucket material	HDPE	Metal/HDPE	Metal
Body coating	Painted/Galvanized	Painted/Galvanized	Painted/Galvanized

The bucket-type belt elevator efficiently transports bulk cargoes vertically with safety handling, minimal damage, low energy consumption, and centrifugal unloading at the head, making it ideal for grain crops and other materials.

Set of elevators 500 t/h

Equipment category	Lite	Standard	Professional
Drive	NRW (Germany)	Motovario (Italy)	NORD
Bearings	CX (Poland)/ SNR (France)	SNR (France)	SKF (Sweden)
Belt STIF	ARTEGO (Romania)/ COBRA	ARTEGO (Romania)/ COBRA	STIF
Belt speed, not more	3,25 m/s	3,25 m/s	3,25 m/s
Bucket material	HDPE	Metal/HDPE	Metal
Body coating	Painted/Galvanized	Painted/Galvanized	Painted/Galvanized

The bucket-type belt elevator efficiently transports bulk cargoes vertically with safety handling, minimal damage, low energy consumption, and centrifugal unloading at the head, making it ideal for grain crops and other materials.

ECOTRU	20	50	100	175	250
Performance, t/h*	10...25	40...70	100...120	150...220	230...280
Belt width, mm	150	200	300	400	450
Bucket	JET13-120 PEHD	JET18-140 PEHD	JET28-170 PEHD	JET37-215 PEHD	JET44-215 PEHD
Wall thickness, mm: headers shoe pipes	2 2 2	2 3 2	2 3 2	2 3 3	2 3 3
D, mm	315	400	500	650	750
F, mm	1250	1450	1770	2050	2250
F1/ F2, mm	1200/ 1110	1400/ 1310	1750/ 1610	2010/ 1800	2210/ 2000
G, mm	1250	1250	1250	1250	1250
J, mm	2480	2480	2480	2480	2480
K, mm	1000	1208	1523	1531	1633
K1, mm	620	750	940	810	860
K2, mm	581.5	673	858	1031	1158
L, mm	1063	1246	1591	1912	2166
NxN1, mm	195x242	248x310	285x435	368x570	368x640
Q1xQ2, mm	242x300	310x300	435x450	570x450	640x600
T, mm	250	250	350	350	450

*The dimensions may vary as the equipment is constantly being refined and improved.

The bucket-type belt elevator efficiently transports bulk cargoes vertically with safety handling, minimal damage, low energy consumption, and centrifugal unloading at the head, making it ideal for grain crops and other materials.

